

Hamsey News

Summer 2026





Contents

Welcome	3
Hamsey Parish Council update	4
Planning	14
Monday Afternoon Club	17
News from St Peter's	18
Friends of Hamsey Church	22
Wild Hamsey	24
Offham Community Speedwatch	26
Rails and Road	28
Bevern Trust	30



Welcome from the Editor

As spring turned into early summer, Chatfield Close was all a flutter as the cocoons we hosted en-masse over the winter turned into butterflies. I have managed to capture some of my 'pupating pets' below as they hatched and made their way into the sky.

This was the reward for the caterpillar invasion we endured in late-autumn. They turned up in their thousands from the fields behind the close, looking to find nooks and crannies within our gardens, sheds and houses to over-winter. I do not exaggerate, literally thousands. I even found one clinging to the toilet bowl and hastily found it a more appropriate spot. Metamorphosis is truly a magical thing. Many did not make it, of course. Some became hosts to wasp eggs, a grizzly end. Others simply did not emerge. As I ventured back into the garden between endless rain, I brushed countless cocoons from every crevice and hiding place.

This experience was in turn fascinating, annoying, morbid and delightful. A testament to the countryside that still surrounds us - I hope we do not lose these unexpected ways to mark the seasons.

Helen Clegg
Editor

helen.clegg@hotmail.co.uk





BEECHWOOD
hall & rural park

WE ARE **ATESCO** CHOOSEN CHARITY FROM 28TH APRIL

VOTE FOR US WITH YOUR BLUE TOKEN AT YOUR NEXT SHOP!



All funds raised will support groups for babies and toddlers in rural areas, helping combat isolation for new parents and children.



28th April - Mid July



Vote for us in store at Tesco Lewes!
Pick up a blue token and pop it in the slot below our sign.

Charity number
206200



beechwoodhall.org

Hamsey Parish Updates



As we prepare for our AGM, I wanted to reflect a little on what we achieved last year. On paper, parish council life is meetings, minutes, consultations, potholes and budgets. There have been plenty of those, believe me. But what it is really about is helping to shape the kind of place people want to live in - somewhere children grow up with happy memories. Somewhere people feel safe walking down the road, know their neighbours, and are not left to face difficult times alone.

This does not happen by accident; it takes practical work, persistence, and a great many people quietly giving their time.

This year, we have seen that everywhere. The Easter Trail, VE Day gathering, Meet Up With Minis, theatre evenings, community days, Christmas festivities and Beechwood Hall events have all brought people together.

They might sound like small things, but they really do matter. They give people a reason to come out, meet neighbours, laugh together, and feel part of something.



Beechwood Hall

Beechwood Hall has had a wonderful year. It is where classes, weddings, yoga, dancing, youth club, theatre, markets and meetings happen, and where, if you stand in the car park long enough, you will probably catch up with half the village.



A great deal of work has happened behind the scenes too: improving the hall's systems, website, bookings and community offer. We now have a stronger programme of regular classes, a good run of weddings, lovely feedback from hirers, and a renewed focus on financial sustainability.

Maintenance and grounds costs have crept up, so the Parish Council has agreed to take on part of the grounds maintenance to help keep the hall on a sound footing in the year ahead. Thank you, Marie, for all your work on this.

HEAR ALL ABOUT IT!

JOIN NOW!

HAMSEY PARISH NOW HAS A
WHATSAPP MESSAGE BOARD!

Hamsey Parish Message Board

WhatsApp group

SCAN ME!



WE ACTED ON FEEDBACK THAT CURRENT SOCIAL MEDIA WAS NOT CONNECTING EVERYONE. **JOIN NOW BY SCANNING THE QR CODE** TO AVOID MISSING OUT ON THE LATEST EVENTS AND NEWS.

REPLIES ARE SWITCHED OFF, NO LENGTHY CHATS HERE!

IF YOU WOULD LIKE SOMETHING POSTED PLEASE EMAIL
CLERK@HAMSEYPARISH.GOV.UK

PLEASE NOTE, TO COMPLY WITH GDPR YOU CANNOT ADD ANYONE TO THE CHAT SO PLEASE KEEP THIS QR CODE FOR OTHERS TO SCAN TO JOIN THE GROUP INDEPENDENTLY.

A huge thank you also to Carolyn, our Vice Chair, whose energy, creativity and organisation have made so much of this possible. The Easter Trail, Christmas Light Trail, theatre evenings, Meet Up With Minis, vision workshops, community events, Beechwood activities... she has a rare talent for turning good ideas into reality. And then, of course, there are her grant superpowers.



Planning

Planning has been a defining issue this year, and it has taken up a lot of headspace. The CALA Homes application and the wider Local Plan pressures have caused understandable concern. This was never simply about housing numbers; it is about infrastructure, road safety, the environment, school places, water, drainage, transport, and the future of the place we all care about.

We have worked hard to make sure Hamsey's voice is properly heard. That has meant meetings, responses, difficult conversations, and more hours spent reading planning documents than any sane person should endure. We are especially grateful to Leith for the diligence, expertise and sheer volume of work he has done, helping the council respond with clarity and strength.

Thank you also to the many residents who have engaged, and especially to Susanne Yule and the "Don't Urbanise Hamsey" group for the extraordinary amount of work they have put in.

The challenge has grown. Alongside CALA Homes, the Draft Local Plan has raised the possibility of hundreds more houses around Cooksbridge and Hamsey. The Local Plan is the document that will shape where development goes for years to come, and once a site is included in it, applications become much harder to resist.

That is why the Parish Council agreed this year to seek specialist planning advice, and to start revisiting our Neighbourhood Plan and Rural Design Code.

In March, we heard from Barcombe Parish Council about how their Design Statement helps them communicate clearly to developers. That is exactly the sort of work Hamsey now needs: a clear account of what matters here, what should be protected, and what good design should look like in a rural parish like ours.



BEECHWOOD
hall & park

Community events Save the Dates!

Hamsey CP School Sept 26 intake Play Date
Friday 17th July 1-3pm

Community Day
Saturday 5th September
from 2pm onwards

Theatre

Come and see **Hah Humbug!** an interactive, funny twist on the classic tale. Tickets coming soon.

15th November

Christmas Trail

Saturday 5th December
Early evening

If you are a local business or local talent who would **like to be involved** or **sell items** at any of our events, please contact c.henry@hamseyparish.gov.uk. We love to use local people and promote local business!.

Roads and rail

Road safety remains a serious concern. We have seen too many accidents and near misses, and councillors have continued to report potholes, flooding, overhanging trees, fallen barriers, dangerous school parking, road marking concerns, and issues around Bevernbridge, Hamsey Lane, Beechwood Lane, Chandlers Mead and the A275.

By March, the council agreed to prepare a formal complaint to East Sussex Highways. The level of service has, frankly, not been good enough. This work is slow and frustrating, and involves a great deal of polite chasing of people who would clearly rather not be chased. But persistence matters, and we will keep pressing for safer roads and better responses.

Thank you to Kate for the many years she has devoted to highways and transport issues, and to District Councillors Mark Slater and Joa Saunders for their continued support on planning, road safety, and protecting the landscape, species and green spaces that matter so much to this parish.



The Hamsey Parish Rail Group continues to manage our relationship with Network Rail, Govia Thameslink and the Cooksbridge Station Partnership. This year the group reviewed current rail issues, welcomed new members, supported the return of station gardening sessions, discussed grants for station improvements and compost bins, and raised practical issues with GTR. Thank you to Robert Baughan, the Hamsey Parish Rail Group, and the Cooksbridge Station Partnership for keeping all of this going.



BEECHWOOD HALL

YOUTH CLUB 2026 DATES

7PM - 9PM

THURSDAY 29TH JANUARY

THURSDAY 26TH FEBRUARY

THURSDAY 2ND APRIL

THURSDAY 16TH APRIL

THURSDAY 30TH APRIL

THURSDAY 4TH JUNE

THURSDAY 16TH JULY

THURSDAY 13TH AUGUST

THURSDAY 17TH SEPTEMBER

THURSDAY 1ST OCTOBER

FRIDAY 13TH NOVEMBER

THURSDAY 10TH DECEMBER

Environment

The environment has been a thread running through the year. We supported the Rights of River Charter for the River Ouse and submitted a response to the Sussex Nature Recovery Consultation. We have started looking at tree protection, the long-term future of the oaks on Hamsey Lane, and how local ecological knowledge can help protect what is special here, starting with our Sussex Tiger. A massive shout-out to Caroline Croft for all her work and time on this.

We also planted daffodils and snowdrops around Cooksbridge. We hope you enjoyed seeing them come through after all that rain. And yes, I am still firmly campaigning for more flowers!

Youth, communications and the village sign

Youth provision has been the highlight for me this year. If we care about the future of Hamsey, we need to care about what it feels like to be young here now. The youth club has been wonderful to see, with young people enjoying themselves, building friendships and, crucially, having fun. Special thank you to Neil for making this work so well, and to everyone who has supported it.



Communication has moved forward too. Not everyone is on Facebook, and quite reasonably so, so the Hamsey Parish Message Board on WhatsApp has been set up as a simple broadcast channel for parish news, events and urgent updates. It is deliberately not a noisy chat group, which I think we can all be grateful for. Please see the QR code to join.

We have also started the village sign project. What represents Hamsey? The river, the landscape, the school, farming, wildlife, the church, the railway, the phone box, the community itself?

We want residents and children to help shape that, so the final sign becomes a symbol of who we are together. Please get in touch if you would like to suggest ideas. We genuinely do want to hear them.

Spotted an issue?



Who to report it to

Spotted a problem around the parish? Did you know you can report these as a member of the public? Here's how to report common local issues quickly and easily. Tear out and keep handy.

Potholes & road damage



If you notice potholes, damaged pavements, or other highway issues, report them online to East Sussex Highways:
live.eastsussexhighways.com/report-problem/report-pothole
or in an emergency 0345 60 80 193

Fly-tipping & litter



Help keep our neighbourhood clean and tidy by reporting dumped rubbish or litter hotspots at:
<https://lovecleanstreets.info/report>

Power outage or dangerous power lines



No power or a line down? Report to:
ukpowernetworkservices.co.uk/contact
or 0800 31 63 105

Water leaks



Seen water pooling where it shouldn't be? Suspected leaks can be reported directly to Southern Water via:
www.southernwater.co.uk/report-a-problem
or 0800 820 999

Rights of way



A stile broken or a right of way blocked? Report to:
www.eastsussex.gov.uk/leisure-tourism/discover-east-sussex/rights-of-way/problems-on-rights-of-way/report
or 0345 608 0193

Fallen trees



A tree over the road or dangerous? Report to: 0345 608 0193 or online
<https://live.eastsussexhighways.com/report-problem/report-problem-vegetation>

Thank yous

There have been changes within the council too, and we still miss Natalie and Amanda. We are grateful for everything they gave to the parish over the years. We have welcomed Leith and Tom, who have both brought valuable experience and perspective at a time when planning pressures are particularly heavy. Leith's expertise and strategic thinking have been hugely important in helping us respond to complex planning challenges. Tom has already brought a thoughtful, practical eye to communications, planning work, Beechwood Hall and the WhatsApp Message Board.

Thank you also to David for being such a steady and dependable presence, supporting Beechwood Hall, the Rail Group, youth provision, solar energy and future improvements.

I also want to acknowledge the many people who quietly make parish life richer:

- Pete Langley for organising litter picks
- Sarah Hughes, Miki Brightmore, Alice Barling Gasson and Martin Blackmore for the bulb planting
- Helen Clegg and all the Hamsey News contributors and deliverers
- Peter Schueler for his wonderful photography
- Circus Kinetica, Howard Eaton, and everyone who throws themselves into the Christmas festivities and Santa sleigh with such enthusiasm



Thank you to Marie, our Parish Clerk, who somehow keeps the rest of us functioning with calmness, patience and professionalism, and to Rachel Clifford, Bernie Smith Jones, Ella Clifford Wilson and Jim Edwards for all the support that helps keep Beechwood thriving.

And finally to everyone who bakes, helps, lifts, stacks, tidies, plans, plants, picks litter, reports problems, supports events, and simply turns up: thank you. If I have missed anyone, it is a failure of memory, not gratitude.

Looking ahead



There is still much to do: planning, road safety, Beechwood Hall, youth work, communication, environmental projects, the Rural Design Code, the village sign and careful use of CIL funding. Most of all, we want to keep protecting the river, the trees, the fields, the lanes, and the feeling of Hamsey itself.

Thank you, as always, for your time, your ideas, your energy, and your care for this parish.

Minty

Chair, Hamsey Parish Council

Planning



Applications still awaiting decision/in progress (as at 30 April 2026)



LW/25/0339 – Land at Cooksbridge Road, Cooksbridge

The provision of 151 residential dwellings (class C3) including 40% affordable housing and commercial floorspace provision (class E), with public open space, soft and hard landscaping, play, space. Community orchard, vehicular access, car and cycle parking provision and associated infrastructure including SUDS provision.

Applications determined/approved since last meeting.

LW/24/0823 – Resting Oak Hill

Cottage, Resting Oak Hill, Cooksbridge
Dropped kerb with access over pavement
Withdrawn

LW/25/0484 – Former Hamsey Brickworks, South Road

Erection of 12 residential dwellings (Use Class C3) with associated access, landscaping, parking, and infrastructure works.

SDNP/25/03056/LDE – 3 Pine Barn, Old Church Lane, Hamsey

Self-contained dwellinghouse.
Approved

SDNP/26/00594/CND – Mill Lane Farm, The Street, Offham

Removal of Condition 8 (access to workers dwelling solely via track) relating to Planning Approval
SDNP/25/04064/FUL

SDNP/25/03057/LDE – The Woodshed, Old Church Lane, Hamsey

Self-contained dwellinghouse.
Approved

SDNP/26/00267/LIS – 17 Bank Cottages, The Street, Offham

Dismantle and rebuild leaning chimney stack.

SDNP/25/04135 – Perseverance House, The Street, Offham

Erection of a new garden studio in place of partially demolished stable block.

SDNP/25/01301/HOUS – Coombe Lane, Mill Laine Farm. The Street, Offham

Demolishing of existing flat roof extension, erection of ground floor side and rear extension and two bay garage. Installation of external staircase and office in roof void.

Approved



New Applications

SDNP/26/00969/HOUS – Hamsey Place, Old Church Lane, Hamsey.
Erection of garden studio.

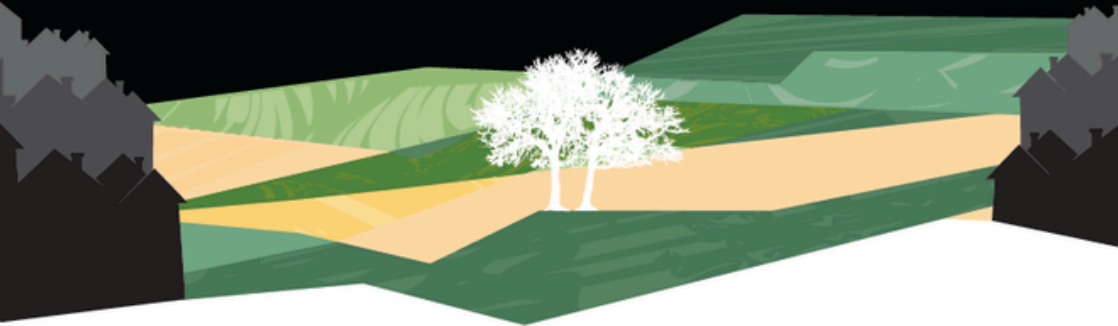
SDNP/26/01293/FUL – Hamsey Place Cottages, Whitfield Lane, Hamsey.
Internal and external alterations to numbers 1 and 2 Hamsey Place Cottages to amalgamate both cottages into one dwelling house.



Other planning news

Offham church (Hamsey Parish) is undertaking to have five trees removed from the bank above The Drove due to their unsafe nature. The trees are in danger of falling and blocking the road, which has resulted in road closures and power cuts. Offham church are addressing this on behalf of local residents and are asking the Parish to make a donation towards this, as we are a very small congregation with limited means and the work is costing in the region of £16,000. If you are interested in helping, please contact Andrew Featherstone at aaf-caf@usa.net.

DON'T URBANISE HAMSEY



JOIN OUR CAMPAIGN

WWW.DONTURBANISEHAMSEY.ORG

Meet Up With Minis



PLAY DATE FOR NEW HAMSEY INTAKE

For children starting Hamsey CP School in Sept 26 to
meet new classmates

17 | JULY | 2026

1-3PM BEECHWOOD HALL

PLUS 2ND HAND UNIFORM SALE



**LITTLE CITY* WILL BE PROVIDING THE
FUN!**

FREE TO ATTEND, SIBLINGS WELCOME.

*LITTLE CITY WILL BE STARTING REGULAR BOOKABLE SESSIONS
AT BEECHWOOD HALL SO LOOK ON THEIR WEBSITE
WWW.LITTLECITYUK.COM

Monday Afternoon Club

In the last few months, we have had our usual wide range of speakers who have certainly brightened up the grey winter days.

Phil Edwards amazed us as he spoke about the help Canine Partners are able to give their human partners, and Alice Fry gave a fascinating presentation on Bevern View, the residential care home in Barcombe.

None of us is likely to forget Colin, a retired Prison Officer at Lewes Prison, who gave us a fascinating insight into everyday life "behind bars".

Our thoughts are now turning to summer plans. On Thursday 16 July, we will be swapping Offham Church Hall for our annual coach trip to Chichester Festival Theatre to see "My Fair Lady".

There is always a very warm welcome for anyone who drops in to our meetings. Just call 07889 281214 for more information.

Judith Bastide and the Monday Club Team



News from St Peters

A pilgrimage?

“It’s a bit of a ‘pilgrimage’ I suppose...” a friend said to me describing a visit to a place which for him had been especially significant. “I just need to reconnect with something...I’m not sure what.” I found myself nodding in recognition; it was a shared understanding. It was interesting that he did not describe this as a ‘journey’ or a visit. Pilgrimage was the word he used.

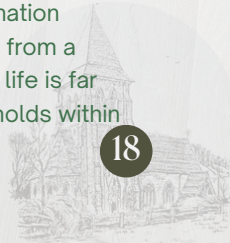
To speak of life as a pilgrimage can sound a bit crass, an ‘off the cuff’ remark with little engagement, the words taken too lightly. But given a more thoughtful engagement, especially as we age, pilgrimage is a more life-giving depiction of life than the rather banal ‘life is a journey’, (as is a bus ride to Lewes).

Pilgrimage suggests a purpose. At the very least it signals that change is factored in, which is not always so with the ‘journey’ image. The ‘journey from the cradle to the grave’ seems rather like a straight line. Whereas pilgrimage suggests stopping along the way, a missed path, a diversion, a getting back on track and a hopeful resolution.

We cannot all make a literal pilgrimage; such walks take time and the ability to do so, but the idea of pilgrimage we can work with. Think of pilgrimage as becoming more conscious of the path of our life and thereby our understanding of ourselves. Life is not simply a journey, but our unique experience. We are pilgrims, not passengers on a bus carried along to a known destination (Lewes!).



Pilgrimage allows us to put life into perspective differently. It becomes a positive concept; there is purpose as well as a destination. Along the way there is the meandering path, dead ends or wrong choices, along with paths of easy walking with heightened understanding, hills revealing awesome views. Significantly the destination remains open to us, different from a journey. A pilgrimage view of life is far more interesting because it holds within it a creative vibrancy.





A literal pilgrimage would involve packing all you might need. However, unlike a bus ride to Lewes, alongside the necessities, you carry aspects of yourself, which come uninvited. Some of which you are aware with the hope that you may 'deal' with them. This, I think, was what my friend had in mind. But there are also parts of you which emerge en route. These also constitute your burden.

The BBC Easter offering of 'Pilgrimage', surprisingly now in its eighth year, started in Whitby and led to the pilgrimage destination of Lindisfarne, or Holy Island. There seemed to be constant drizzle, the grey seas are as wild, and the clifftops as precipitous as they would have been to the earliest Christian wanderers. This year's participants are a mix of faiths and no faith as is usual.

There is a genuine curiosity and politeness about the religious observances of their companions. Yet as is always (almost) the case in this program, there is a sense in which no one worries about being uncertain, muddled or confused. However 'together' they initially appeared, each chosen for some celebrity status, this is stripped down by their experience. They become just people helping each other complete a task. None of them was unchanged by their participation.

In an earlier series, towards the end one of them said, "This has been great...I mean, when do you ever sit down with your mates and say, 'Let's talk about faith', never!" How true. This series shows how the 'big questions' of life are those we all work with but rarely - if ever - discuss.



OLD HAMSEY OPEN DAY



...a Musical & Floral celebration

SUNDAY 12 JULY 2026 – 2 to 5pm

- Raising funds to save Old Hamsey Church
- BUY-A-BLOCK TO RESTORE THE BELL TOWER
- Homemade Cakes, Teas & Refreshments
- Music all afternoon from Terry Lees, Jason & Lisa, John & Di Cullen, the harmonising Botticellis and more
- Floral Displays • Pimms table
- Plants for sale • Raffle
- PATINA Moving On 2026 'Absolute Legends' display
- Church exhibition and graveyard information



ALL WELCOME
www.friendsofhamsey.org



OLD HAMSEY CHURCH, IVORS LANE, HAMSEY, EAST SUSSEX BN8 5TB

A pilgrimage allows time to 'reset' life. Undertaken with others we benefit from articulating our thinking and challenging our perception of ourselves, which can be hard to do, but the benefit is huge. Undertaken alone, a pilgrimage view of life helps us balance our experiences. Either way, with others or alone, taking time to 'go over' our life, facilitates healing, closure, confidence and inspiration to 'pick up our backpack' and continue. May this be so for my friend.

There is a small pilgrimage we can make simply by parking at St Peter Offham and walking either on the road or across the fields to Old Hamsey church. A site of worship dating back almost 1000 years. A short walk but if done purposefully, every bit as good.

Reverend Anne Dunlop



Friends of Hamsey Church

Old Hamsey Church is open most weekends from 10:00 until 16:00 until December, thanks to our splendid rota of local volunteers. An 8:00 communion and 18:00 evensong service will take place on the first Sunday of every month up until 06 September.

Following a break due to last year's restoration works, the Musicians of All Saints make a most welcome return to Hansey on Sunday 14 June with the Mistral Wind Quartet at 18:00. On the evening of Sunday 21 June the MAS Quartet will perform a programme featuring the works of Hadyn, Butterworth and Beethoven.



Please note that a wedding ceremony taking place on Saturday 30 May will necessitate limited access.



Friends of Hamsey Church

Our annual Friends of Hamsey Open Day takes place on Sunday 12 July from 14:00-17:00 with the usual splendid musical performances, teas, cakes, a Pimms table, plant sale, raffle, church information and a chance to see some of this year's PATINA Moving On 'Absolute Legends' creations. Do come along and support us!

Another welcome return will be the Angels with Attitude Community choir which will be performing at Hamsey 15:00 on Sunday 19 July.

When visiting the church, do please sign the Visitors Book, even if you have done so before. Your comments confirm the ongoing interest in the history, appeal and conservation of our beautiful church and will assist with future grant applications.



Watch out too for our Buy-a-Block crowdfunder to raise £60k for the repointing and repair of the Tower, which now suffers from both failed pointing and non-breathable cement mortar replacement, rather than the necessary lime mortar; this must be replaced and some stonework repaired.

Marion Hughes
*Friends of Hamsey Church Events
Committee*





...es ut euam. Lect
...lor sit amet consec

...ilisis magna... tempor orci eu
...ntum edicere faceriat nequibus nibl



In nisi nisi scelerisque eu ultrices vitae
Facilisis volutpat est velit egestas dui. Era
orta lorem mollis. Orc

Wild Hamsey

From Peter Schueler

ca justo nec ultrices. Eget est

Offham community speed watch

A Community Speedwatch team was set up last year by eight concerned Offham residents in an attempt to address the dangerous speeds of so many drivers passing through our village, where the speed limit is 30mph.

With 14 sessions running from March until the beginning of August 2025 we found that speeds of 40-45mph are very common with the occasional 47-51mph not unknown.

One black Volkswagen was a repeat offender, clocked at 41mph on 11 June and 37mph on 23 July at around 16:50.

It was disappointing to learn at the end of last year from Community Speedwatch Officer Steve O'Connell that so many of the speeding drivers we recorded live quite locally.

Those reported receive an advisory letter from the police in the first instance.

There were 66 active Sussex Speedwatch groups during April. The information we gather is shared between CSW groups nationally so persistent offenders can be easily identified and dealt with accordingly.

Three new Offham recruits have joined our team for 2026. This year's sessions started on 10 April when we recorded 29 of the 445 vehicles travelling south through Offham at excess speed (6.52%). On 11 April we recorded 563 vehicles travelling south of which 53 were speeding (9.4% – 16 of them at over 40mph). A white Fiat travelling at 51mph was recorded just after noon on 12 April. Sunday 3 May saw an incredible 859 vehicles driving south, of which 39 were speeding (4.54%).



We occasionally receive rude gestures, are sworn at and told to “get a life”. We are trying to improve the quality of the lives we already enjoy, thank you, and save others. Last month CSW Group’s reported 173 minor instances of abuse to Sussex Police – the two most serious cases are currently under investigation. Body worn video is now used.

On average, 45 people are killed and almost 1,000 are seriously injured on our roads every year. This year we will be joined on some sessions by officers from the Sussex Police Fatal Five Unit based at Burgess Hill – a new unit set up specifically to tackle the five most common causes of fatal and serious injury collisions:

- Drink and drug-driving
- Speeding
- Failing to wear a seatbelt
- Distracted driving
- Careless driving

The Sussex Police repeat offenders’ compliance rate currently stands at 95.10%. This ratio is based on drivers who have received a first letter from Sussex Police, not being reported again through the CSW system within a 12-month period.

MH for the Offham Speed Action Group



**COMMUNITY
SPEEDWATCH**

Rails and roads

We are pleased to provide our usual update on rail issues affecting our parish.

Cooksbridge station partnership

- Daffodils: the station platform bank has never looked so cheerful as it did during this daffodil season
- Volunteers: we are very happy to have help in the gardens in any way and always welcome new volunteers
- Waiting room display: there are more daffodils on display in the waiting room created by Emma and Georgia's Early Years Group
- Composting bins: we have installed two new composting bins to collect fallen leaves next autumn to turn into leaf mulch
- Vistas: our ongoing project is to open up the wonderful view of the Downs from Platform 1



Train service

Our local train operator, Govia Thameslink Railway (Southern), introduced a new timetable for train services from Cooksbridge with effect from Sunday 17th May 2026.

There was only one very minor change to the existing timetable, with the hourly, seven-days-a-week service of Up direction trains to London and Down direction trains to Eastbourne being maintained.

Other rail news

- Rail industry reform: the bill for the creation of Great British Railways (GBR) is currently passing through the House of Commons
- Public ownership: services provided by Govia Thameslink Railway will transfer into public ownership on 31 May



Hamsey spring litter pick

On Sunday 26 April, there was a great turnout for the Hamsey Spring Litter Pick. Eleven volunteers attended on the day, with three more pitching in at different times. We managed to tidy the whole parish and hope everybody can see a difference. We collected 15 large bags of waste. The most surprising find was a bra hanging on a fence at the top of Deadmantree Hill!

The next litter pick is coming up on Sunday 26 July, meeting at Beechwood Hall at 10:00. Everyone is invited—all the gear you need will be provided.

Peter Langley



Building for the future

We are excited to share that we have now appointed a contractor for our Space to Thrive project at Bevern View, with construction work on our new activity space, office and staff room due to begin in late June.

After many months of planning, fundraising and preparation, it is wonderful to finally see this important project becoming a reality. The development will make a huge difference to the lives of our residents, helping us create improved spaces that better support comfort, wellbeing, accessibility and opportunities for meaningful activities.

As with any building project, there will inevitably be some temporary disruption over the coming months, including periods of noise, increased activity and deliveries to site. We are working closely with contractors to minimise the impact as much as possible for both residents and our neighbours, and we are very grateful for the patience and understanding of the local community while the works take place.

Although the disruption will be short term, the benefits will be long lasting, helping us provide an even better environment for the people who call Bevern View home. Thank you again to everyone who has supported the project so far – we look forward to sharing updates as work progresses.



Donate: www.beverntrust.org

Email: info@beverntrust.org

Follow us on social media: [@thebeverntrust](https://www.instagram.com/thebeverntrust)

The Bevern Trust is a disability charity based in Sussex, and Bevern View is its residential home.

**HAMSEY NIGHTS
PRESENTS**

**BACK
TO THE
OLD SKOOL**

**SATURDAY 5 SEPTEMBER
BEECHWOOD HALL | 7 TIL LATE**



HAMSEY PARISH SUMMER PARTY

SATURDAY 5TH SEPTEMBER
2PM ONWARDS
BEECHWOOD HALL & PARK

INFLATABLE OBSTACLE COURSE
BOUNCY CASTLE

AUTIN DANCE THEATRE
PERFORM ZIG ZAG!
2 X 20 MINS SHOW

MUSIC, PLUS DJ FROM 7PM
ONWARDS

LOTS OF FOOD & DRINK FOR SALE

